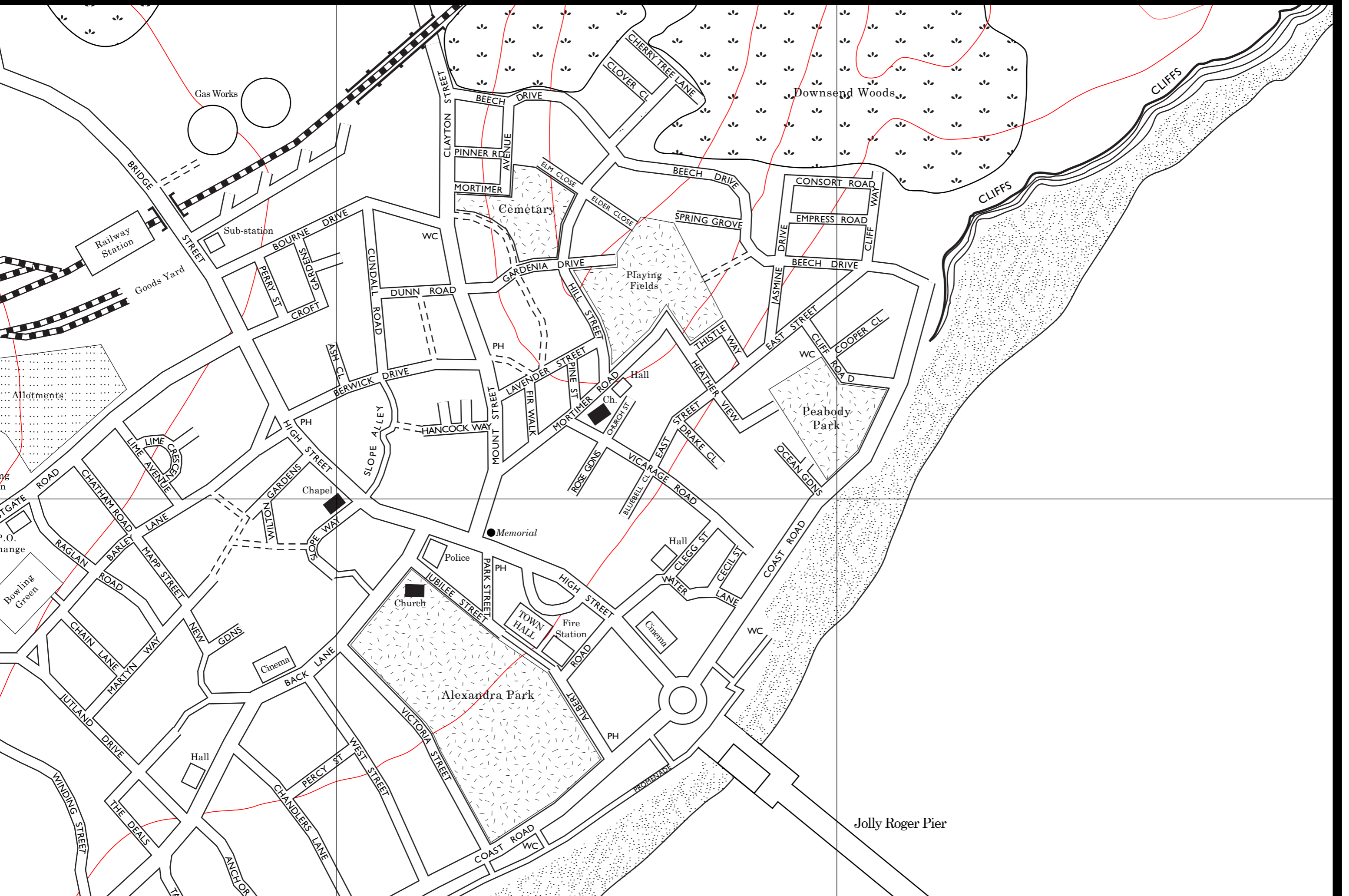


63 miles

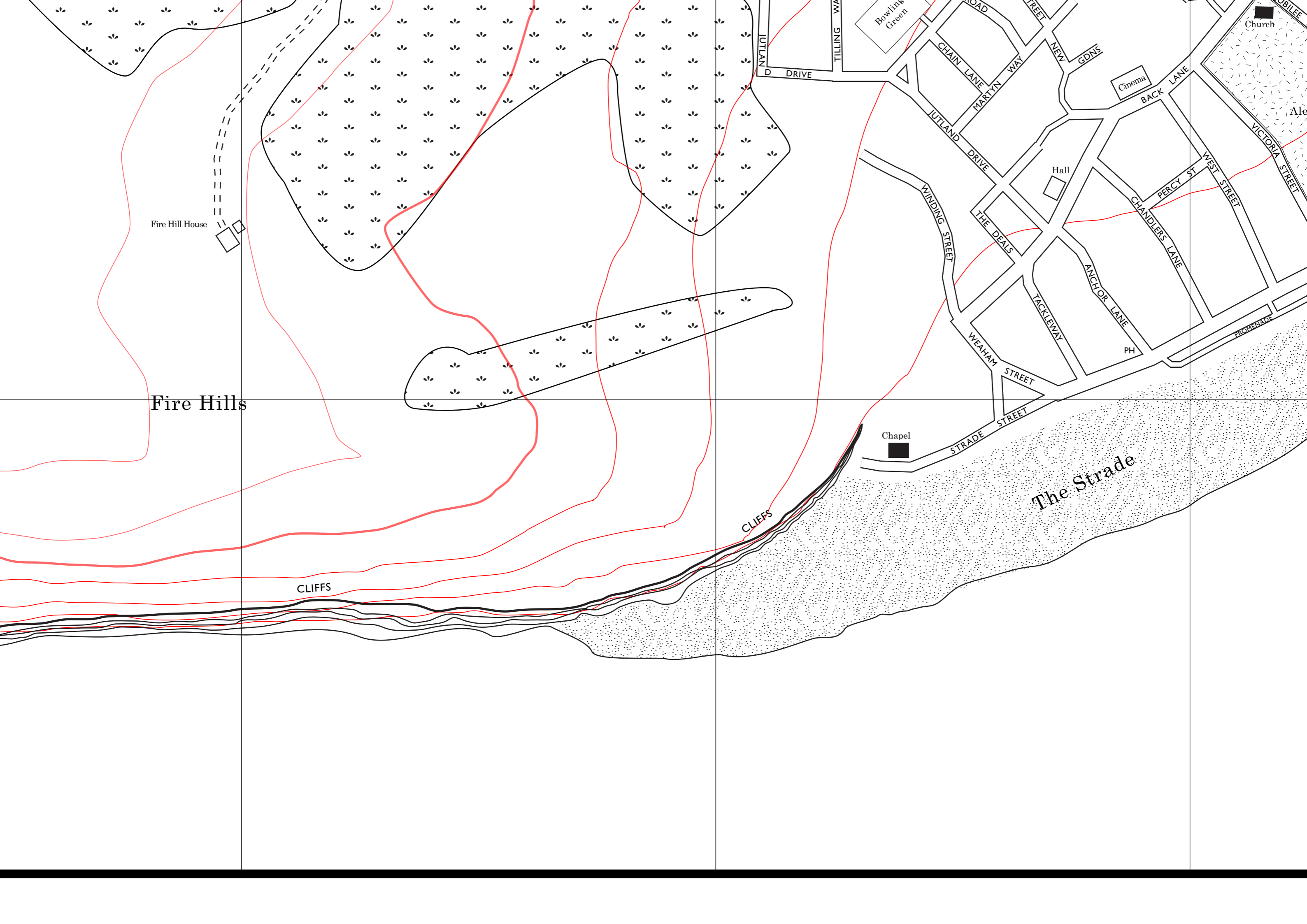
Winchelsea, 6 miles





WALMINGTON-ON-SEA

ENGLISH
CHANNEL



Fire Hill House

Fire Hills

CLIFFS

CLIFFS

Chapel

Hall

Cinema

Bowling Green

Church

The Strade

Map showing street network and landmarks:

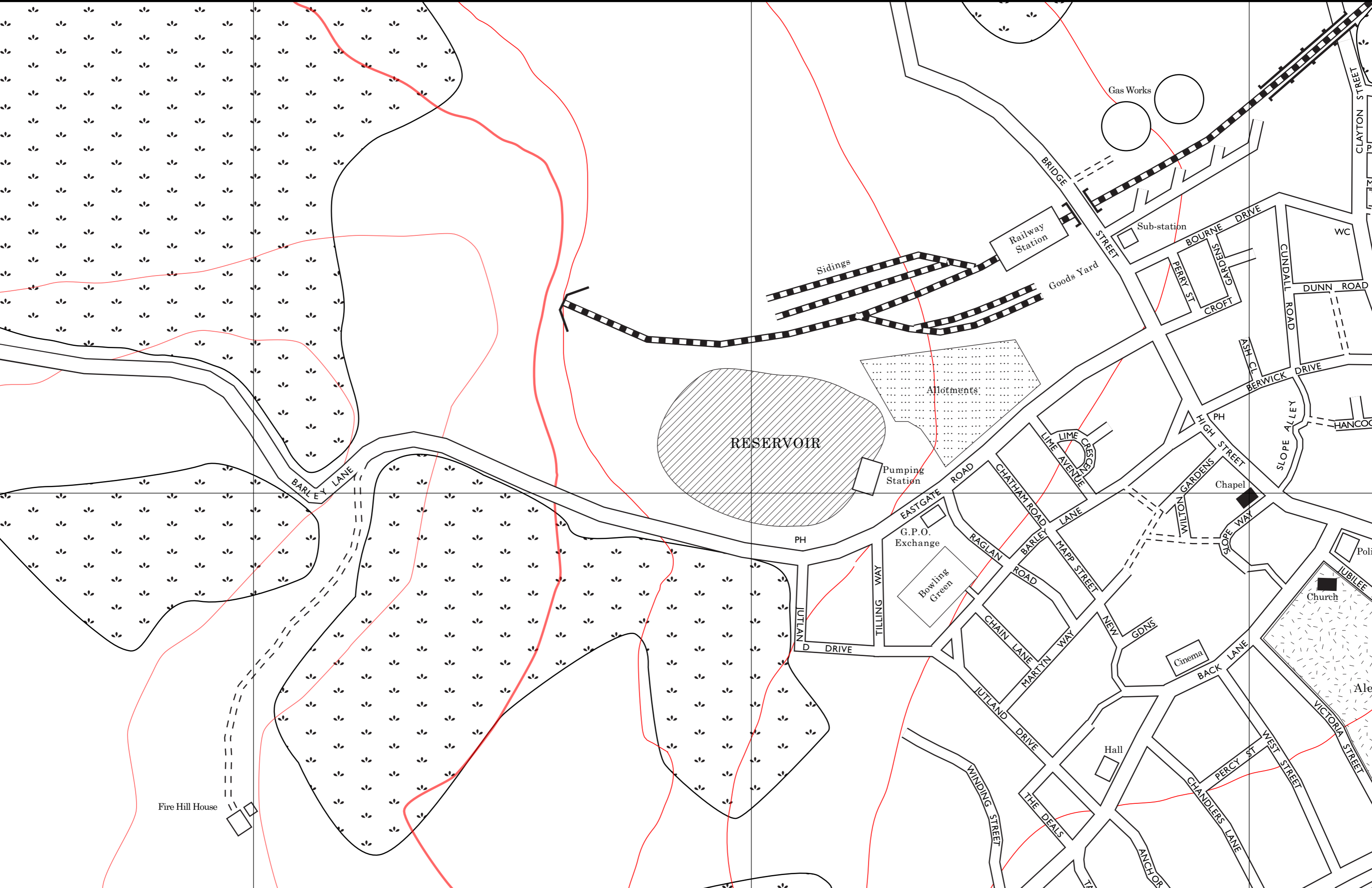
- JUTLAND DRIVE
- TILLING WAY
- CHAIN LANE
- MARTYN WAY
- NEW GDNS
- BACK LANE
- WINDING STREET
- THE DEALS
- ANCHOR LANE
- CHANDLERS LANE
- PERCY ST
- WEST STREET
- VICTORIA STREET
- WEAHAM STREET
- TACKLEWAY
- PH
- PROMENADE
- STRADE STREET

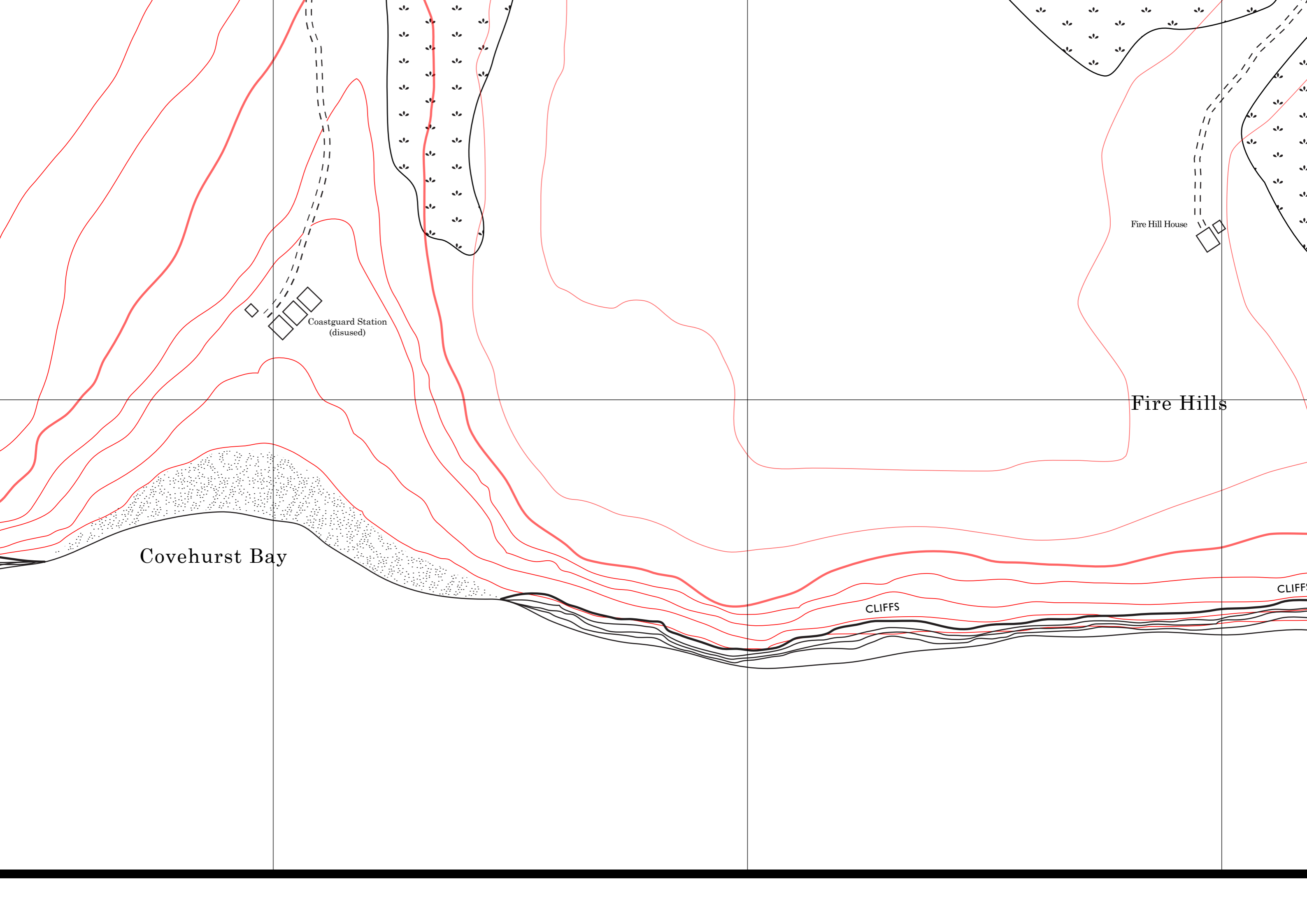
Map showing terrain features:

- Large area with small black symbols (possibly trees or vegetation).
- Red contour lines indicating elevation.
- Black outlines of hills and cliffs.

Map showing specific landmarks:

- Fire Hill House (represented by a small building icon).
- Dashed lines indicating a path or boundary.





Covehurst Bay

Coastguard Station
(disused)

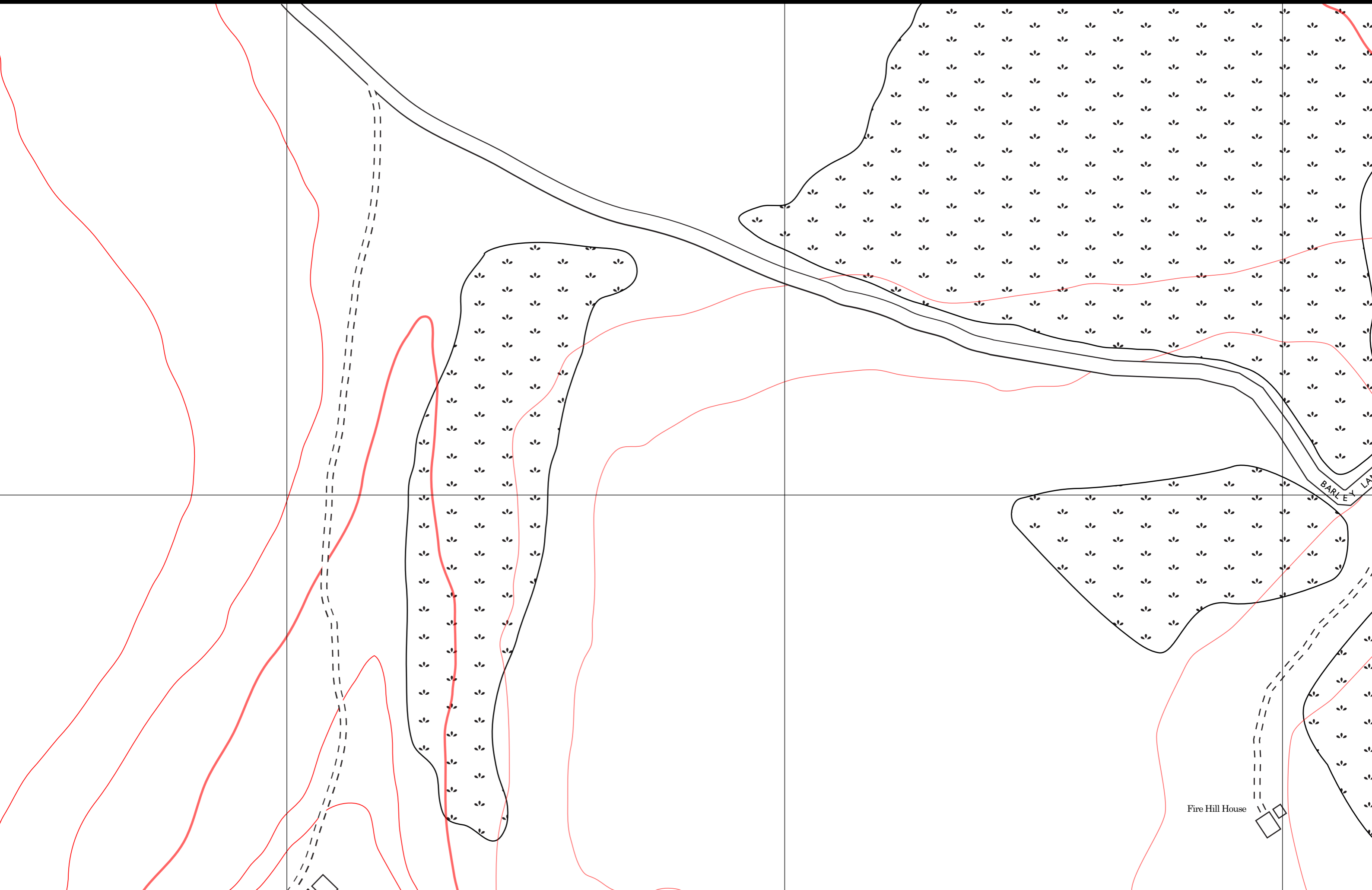
Fire Hill House

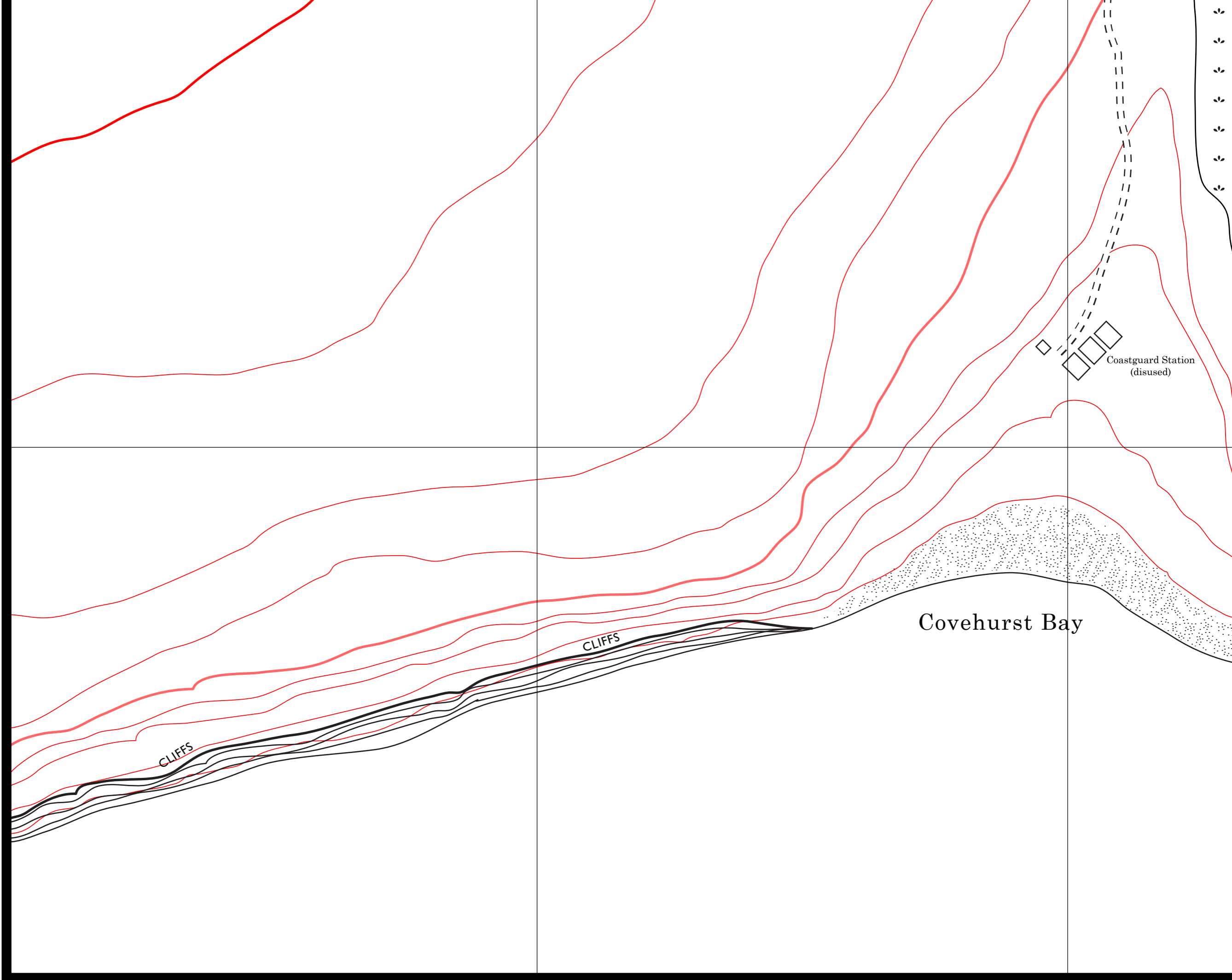
Fire Hills

CLIFFS

CLIFFS

Eastgate, 4 miles





CLIFFS

CLIFFS

Coastguard Station
(disused)

Covehurst Bay

Eastgate, 4 miles

